

NOTHING COMPARES

The best in high-quality European engineered pet safety and travel products



THE SOURCE FOR SAFE PET TRAVEL

Your commitment to your pet is for life...so is ours.







SPCT Method

MIM Safe Variocage – The Most Rigorously Crash Tested and Proven Dog Transport Cage in the World

- **ONLY Crash Tested Cage Rated Using Government Safety Standards**
ISO 27955 | ECE R-17 | ECE R-44
- **ONLY Cage Tested Using Safe Pet Crash Test Standards**
TESTED BY SP TECHNICAL RESEARCH INSTITUTE OF SWEDEN
- Perfect Track Record of Safety for Over a Decade
- 14 Adjustable Sizes to Fit Most Cats, Dogs and Vehicles
- Locking Doors With Gas Hydraulic Motion Springs
- Built-In Key Lock and Padlock Mounting Tabs for Security
- High-Quality Powder Coated Steel Construction
- Emergency Escape Hatch for Added Safety
- Built-In Crumple Zone Absorbs Impact
- No Modification to Vehicle Required



MINIMAX



COMPACT



SINGLE

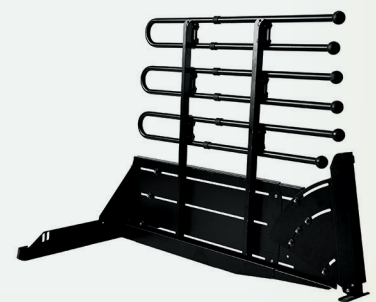


DOUBLE



MIM Safe Variogate – Transforms Your Cargo Area Into a Spacious, Safe and Secure Environment for Transporting Pets

- Safely Secures Animals and Cargo
- Allows Maximum Use of Cargo Area
- Fully Adjustable to Fit Most Station Wagons and SUV's
- Built-In Key Lock for Security
- Locking Doors With Gas Hydraulic Motion Springs
- High-Quality Powder Coated Steel Construction
- Short and Long Dividers Are Available as an Accessory
- Works With our Universal TrafficGard for Optimal Safety
- No Modification to Vehicle Required

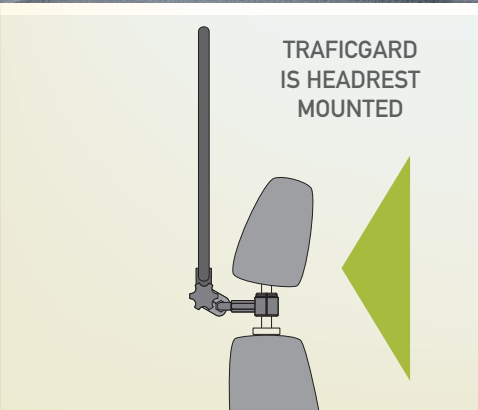
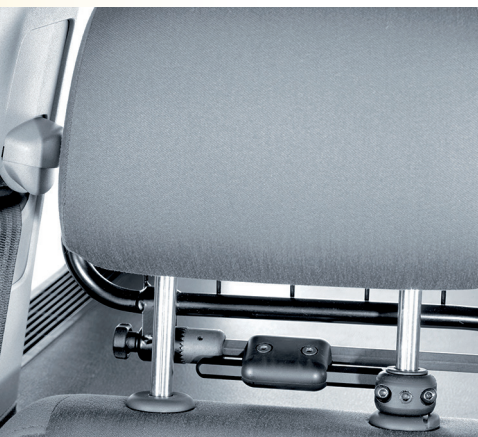


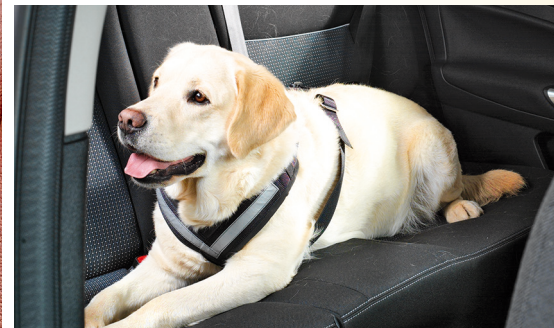
VARIOGATE
DIVIDER



Universal TrafficGard - Keeps Pets and Their Families Safe

- Safe, Strong, Superior Design Stays Firmly Attached
- Mounts Securely to Headrests of Rear Seats
- High-Quality Powder Coated Steel Construction
- High-Strength Brackets and Hardware
- Adjusts to any Angle
- Allows Seats to be Folded Down
- Works With our Variogate for Optimal Safety
- No Modification to Vehicle Required





ORIGINAL
ALLSAFE
PET SAFETY HARNESS



The Original AllSafe - #1 Crash Tested Pet Safety Harness Worldwide

- **Crash Test Rated Using Government Safety Standards**
DIN-75410-2 | ECE R-17 | FMVSS 213
- **Perfect Track Record of Safety for Over 15 Years**
- **Four Sizes Available to Fit a Wide Variety of Dogs**
- **High-Quality Nylon and Stainless Steel Construction**
- **Reflective Banding for Increased Visibility in an Emergency**
- **Transitions Easily From a Car Safety Harness to a Walking Harness**
- **Highest Rated Tensile Strength and Superior Crash Test Performance**



www.4x4northamerica.com



CLICK'N ROLL

Click'N Roll - Automatic Retractable Dog Seat Belt System

- Durable, Retractable Seat Belt Withstands 1,100 lb Tensile Load
- Connects to Seat Belt Buckle Rather Than Seat Belt Strap for Greater Stability
- High-Strength Metal Clip and Swivel Connects Easily to a Safety Harness
- Solid Metal Closures and Mechanical Parts
- Easy to Clean Heavy-Duty Black Plastic Cover
- Optimum Comfort and Protection in a Handy Compact Size
- Ideal for Use With a Safety Harness

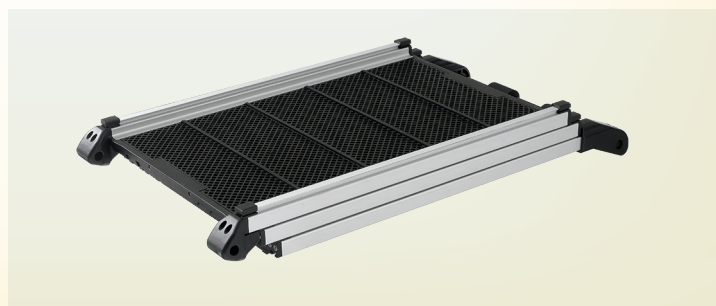
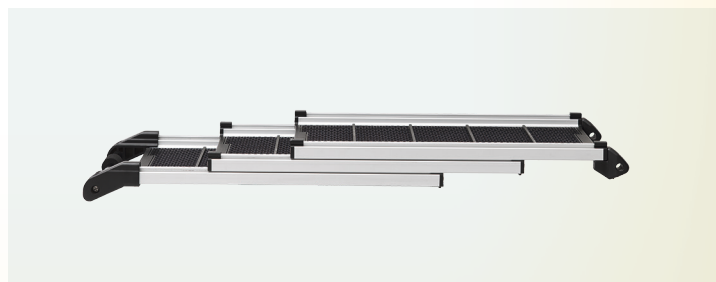
NOT INCLUDED



DOGWALK

DogWalk - Compact, Super Lightweight, Expandable Aluminum Dog Ramp

- 3-Section Expandable Ramp Adjusts From 28.75" – 64"
- Extremely Lightweight, Strong and Easy to Transport
- "Super Grip" Tread for Secure Footing
- Incredibly Smooth, Trouble Free Opening and Closing
- Angled Rubber Bottom Grips Hold Ramp Steady
- High-Quality Anodized Aluminum and Durable Plastic Components
- Fast, Portable Space-Saving Modern Design
- Compact and Easy to Store
- Supports up to 187 lbs





WALKUP

WalkUp - Long, Lightweight,
Expandable Aluminum Dog Ramp

- 2-Section Expandable Ramp Adjusts From 43.3" – 72.83"
- Lightweight, Strong and Durable
- "Super Grip" Tread for Secure Footing
- Simple to Open and Close
- Angled Top Grips Hold Ramp in Place
- Suitable for Use on Stairs
- High-Quality Anodized Aluminum Construction
- Convenient Carry Handle for Easy Transport and Storage
- Supports up to 187 lbs





ROLLMAT

RollMat - Unique, Portable, Easy to Store Mat Protects Dogs and Vehicles

- Helps Prevent Dogs From Slipping While Entering or Exiting Vehicle
- Protects Vehicle From Dirt and Scratches
- Covers Door Latch to Prevent Dog's Nails From Catching
- Heavy Duty Washable Polyester Cloth Resists Tearing and Punctures
- Securely Attaches to Cargo Area Tie Down Hooks
- Easily Deployed and Stored While Secured in Place
- Storage Case With Carrying Strap and Installation Hardware Included



Softplace

**Softplace - Luxurious, Durable, High-Quality
Crate Mat and Pet Bed**

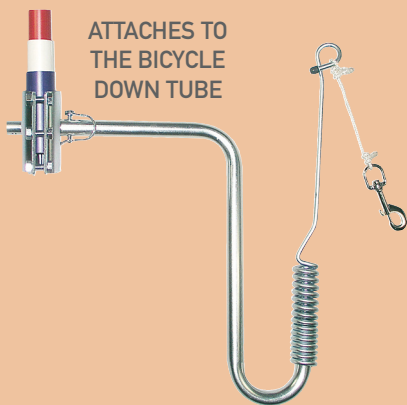
- Warms and Cushions Pets
- Extra Thick Padding Protects Joints
- Highly Resistant to Dirt and Pests
- Washable up to 104 Degrees Fahrenheit
- Quick Drying
- High-Quality Materials and Craftsmanship
- Available in 4 Sizes to Fit Most Cats, Dogs and Vehicles

DOGRUNNER



DogRunner - Safety Tested and Approved Device Allows Bicycle Riding With a Dog

- The World's ONLY Safety Tested and Approved Bicycle Dog Runner
- Low Center of Gravity Prevents Dog From Pulling Rider Off Balance
- Maintains Safe Distance Between Dog and Bicycle
- Keeps Both Hands Free for Steering and Protects Rider From Dangerous Falls
- Quality Engineering, Design and Construction
- Ideally Suited for a Dog That Is Not Well-Trained
- Securely Attaches Directly to Down Tube of Bicycle
- Easily Removed With Secure Quick Release





Dog & Roll - A Fully Automatic Retractable Dog Leash for Bicycles

- Suitable for Paved Streets or Off-Road Trails
- Keeps Both Hands Free for Steering
- Automatically Maintains Proper Length and Will Not Tangle
- Extends to 25.5" in Length
- Ideally Suited for Well-Trained Dogs of Medium Size or Larger
- Securely Attaches Directly to Bicycle Seat Post



ATTACHES TO THE
BICYCLE SEAT POST



CLAP!

Clap Leash - A Quick, Easy and Pain Free Way to Train Dogs

- High-Quality Materials Construction
- Quick Tug of the Leash Produces a Clap Sound
- Unique Clap Feature Commands Dog's Attention
- Use Command With Clap Sound to Teach Desired Behavior
- Not Recommended for Dogs Less Than 22 lbs
- Total Length is 46" When Fully Extended



FUNLINE

FunLine Toys - Superior Quality, Extremely Durable, Long-Lasting Dog Toys

- Multiple Layers of Strong Materials
- Extremely Durable With a Tough Nylon Cover
- Specially Designed Fortified Edges
- Triple Stitching for Maximum Strength
- Highly Resistant to Tearing
- Squeaks, Floats and Is Machine Washable
- Protective Coating
- Available in a Variety of Shapes and Sizes



BOOMER



SNAPER



BONER



PETBOX

PetBox – Hygienic, Food Safe Portable Container for Convenient Storage and Transport of Food and Water

- Superior Design and High-Quality Construction
- Comfortable to Hold and Easy to Use
- Serving Section Features 2 Bowls
- Bowls Hold 2 Cups of Food or 12 oz of Water Each
- Water Jug Holds 70 oz of Water
- Clear Section Shows How Much Water Is Left at a Glance
- Available in 4 Color Combinations



**Aquamat – Convenient, Automatic
Water Fountain for Pets With Unique
Dual Feed Feature**

- Fully Automatic
- Portable and Easy to Use
- Fills With Garden Hose or Water Bottle
- Suitable for Use Indoors or Outside



SHOWN WITH WATER BOTTLE



CleverTank⁺

CleverTank - Portable, Collapsible Sealed Folding Tank for Liquids, Solids and Hazmat With an Amazing Variety of Uses

- Protect Areas From Liquids, Debris, Gear, Tools and More
- Contain Liquids, Solids, Dirt and Debris Without Spilling
- Fast and Easy to Deploy, Store, Transport and Clean
- Durable, Rugged, Strong and Safe for Heavy Loads
- Includes Transport Case With Carrying Handles
- Available in Different Colors and Sizes
- Great for Campers, Hikers, Athletes, Sportsmen, Contractors, Gardeners, Emergency Responders, Mechanics, Tailgaters, Families, Pets, Kids and More



STORED



CLOSED

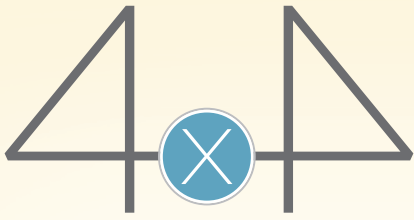


OPEN



In Loving Memory of Toby

Your commitment to your pet is for life...so is ours.



NORTH AMERICA

THE SOURCE FOR SAFE PET TRAVEL

- The Best in High-Quality European Pet Safety and Travel Products
- Proven Crash Test Performance and Track Record of Safety for 25+ Years
- Designed by Automotive Safety Engineers With 50+ Years Experience
- Superior Quality Design, Engineering and Construction



www.4x4northamerica.com

info@4x4northamerica.com | 310-310-5891

klein/metall[®]
Transportschutzsysteme



ingra

mim
CONSTRUCTION



SPCT Method

Your commitment to your pet is for life...so is ours.